

Stereo Zoom Microscope



MSZ0745

Sharp stereo erect image over a wide field of view
 45° inclined and rotatable binocular head
 The interpupillary distance is between 55mm-75mm,
 The left ocular-tube with diopter adjustment ± 5 dp
 Zoom ratio 1:6.4 Objective zoom range 0.7x-4.5x
 Eyepiece WF10x, $\phi 20$ Working distance 100mm

LED & Fluorescent Lighting Set



CL-60



HXD-1A

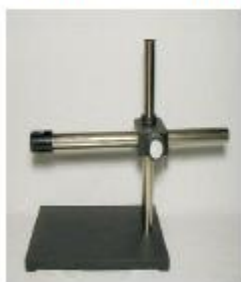


HX-1



HX-4

Different Type of Stand (Or Custom Fabrication Stand)



For Enquiry

Please Contact - sales@mtsc-solution.com

Call or WhatsApp 019-5138118 (TY Khoo)

Magnification - 3D, 5D, 8D & 10D

3 diopter (1.75X magnification) – Suitable for long hour use

5 diopter (2.25X magnification) – Suitable for long hour use

8 diopter (3X magnification) - not suitable for long hour use

10 diopter (3.5X magnification) – not suitable for long hour use

(magnification = $(\frac{1}{D} + 1)$ diopter (D), example 5D = $\frac{5}{4} + 1 = 2.25$ Magnification)

- **ESD Safe (Black Colour) or Non-ESD (White Colour)**
- **LAMP or LED Lighting Set**

Black ESD Safe Magnifier Lamp



Non-ESD Magnifier Lamp – White Colour

Model : 8606-D-ESD (FLUORECENT) / 8606-L-ESD(LED)

Lens material: Glass

Lens size: 5"

Diopter: 3D;5D;8D;10D

Voltage: 220-240V

Light Source:T9 22w energy saving circular fluorescent lamp (Fluorecent)

LED Light Source : 60PCS SMD LED(High Luminous)

Standard mount: Desktop clamp

Color: black

ESD: Surface resistance is 10^5 .

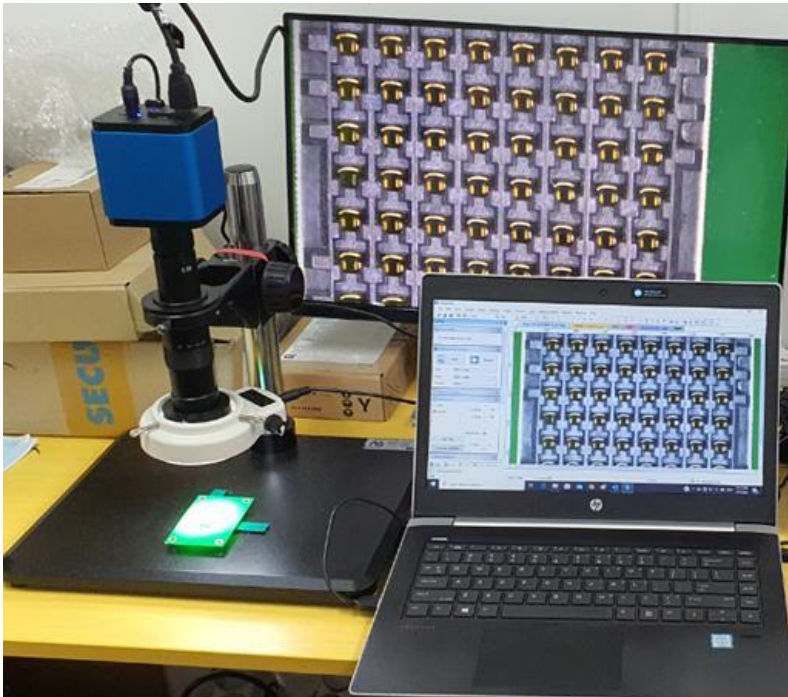
For Enquiry

Please Contact - sales@mtsc-solution.com

Call or WhatsApp 019-5138118 (TY Khoo)

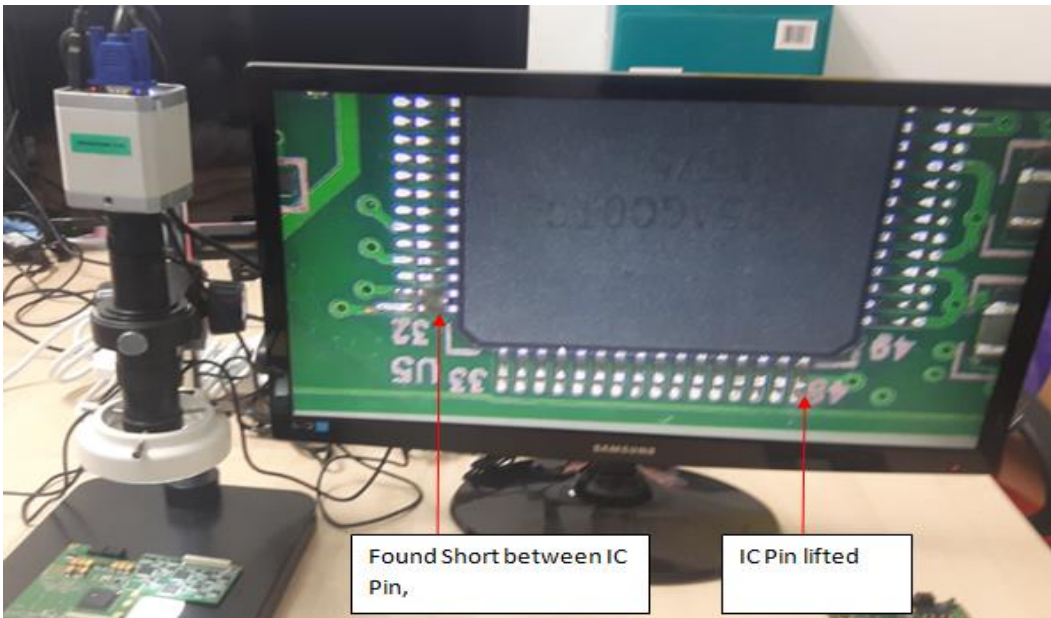
High Quality Stereo Zoom Microscope – Link with software with laptop

Model: MVS-1001A (Come with Auto Focus & do measurement)



Key Feature

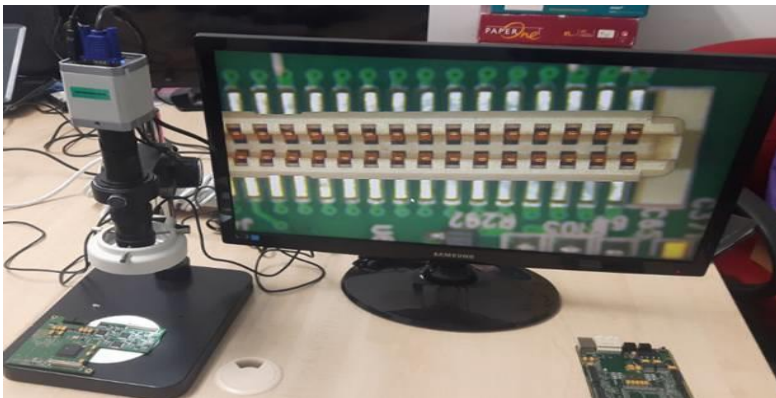
- **AUTO FOCUS Function & WIFI connection**
- **Camera direct HDMI Output to Monitor without PC**
- **High Resolution VGA output with Color CCD Camera**
- **Standard system come with 12" x 15" wide base stand with fabricated long pole**
- **Easy to setup & friendly user for QA/inspection checking & take and save picture into SD card**
- **Image transfer to LCD/LED monitor for doing inspection & save in SD card or local drive by supporting free SW**
- **Do image comparing & measurement**
- **Maximum magnifier over 100x** (base on combination of camera, focus & auxiliary len & LCDLED monitor 20"-24")



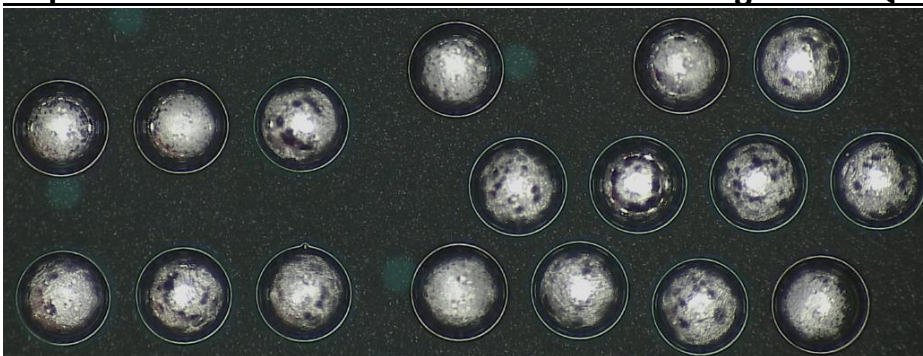
Found Short between IC Pin,

IC Pin lifted

Optional Accessories



Inspection For BGA ball size 1mm – For Checking Solder Quality



For Enquiry

Please Contact - sales@mtsc-solution.com

Call or WhatsApp 019-5138118 (TY Khoo)